



IN CAB CONTROLS



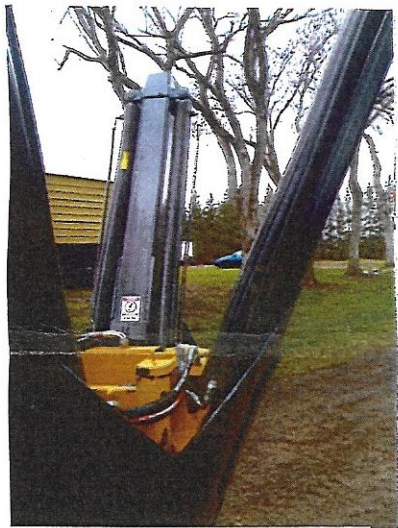
DIGS 44" DEEP



BOLT LOCK UP



100% ROOT CUT



DOUBLE CYL POWER



12 VOLT VALVES



REQUIRE 300 LB



DIGS TREES IN SAND



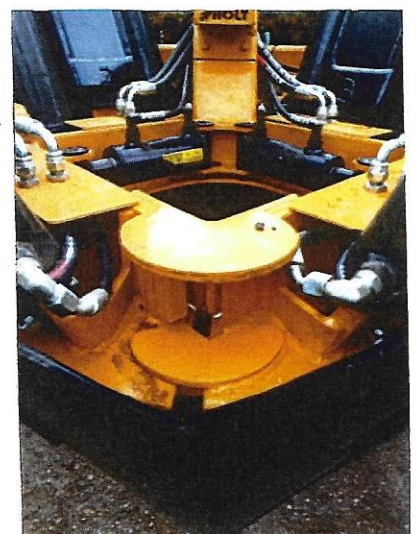
39" HOLE



100% NYLON COVER



GATE OPEN CYL



REAR GATE LOCK



PROTECT PLATE



DOUBLE GREASE



2500 LB LIFT OUT RIGGER



HT 90" WT 74" OPEN

JACK HOLT TREE STUMP EXTRACTOR
PLUS COMBINATION 39" TREE SPADE FOR SAND