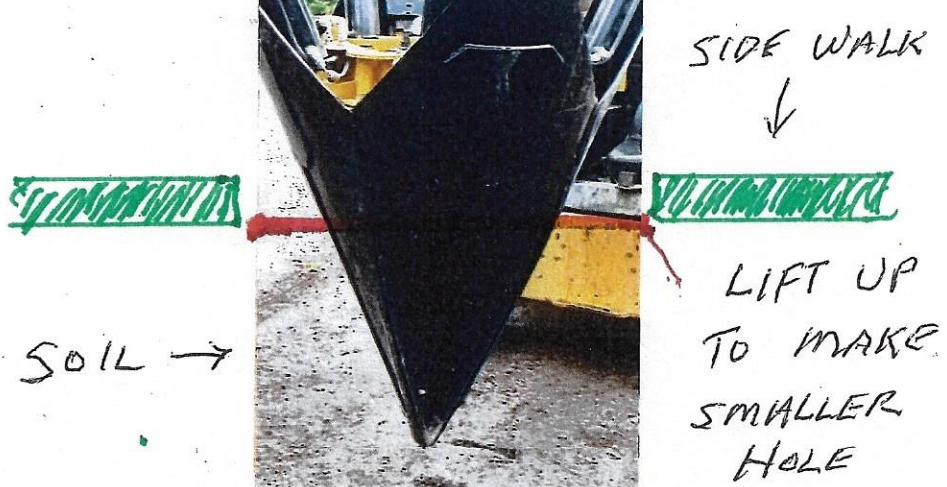
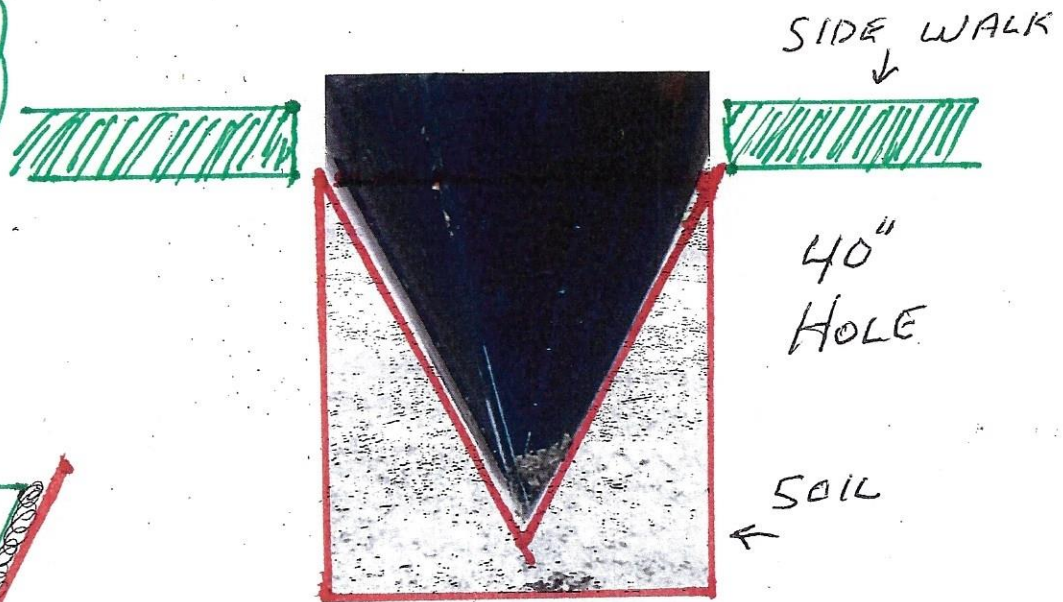
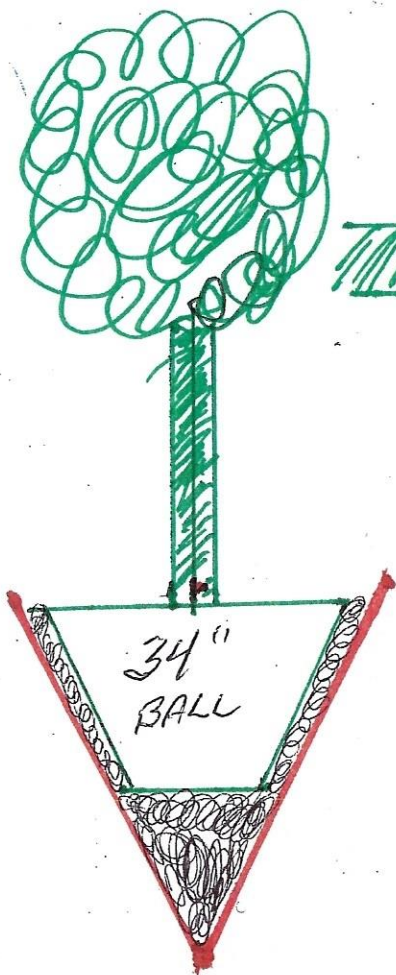
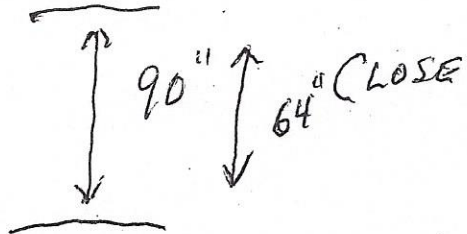


DIGS = 39"-40" HOLE 44" DEEP, VERY
CLEAN CUT HOLE, MY COMPANY DUG THOSE
SIDEWALK PITS MANY YEARS AGO, AND
FILLED THEM WITH SCREENED BLACK LOAM
SO YOU CAN PLACE NEW BASKED IN NEW HOLE
AND WATER LOOSE SOIL IN TO SEAL





DIGGER



WHEN OPEN

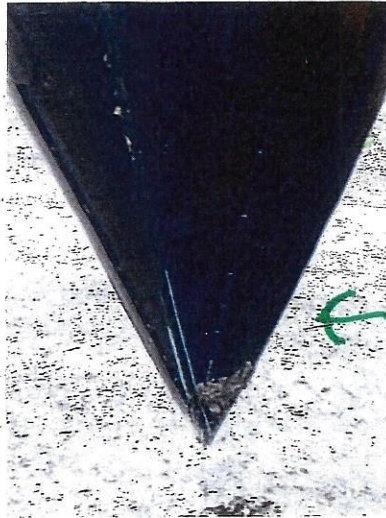
← 74" →
OPEN

CLOSED
60"

THIS FRAME
BOLTS OUT TO
ALLOW GATES TO
OPEN TO USE
MACHINE AS
TREE DIGGER



SHOVELS
OVER LAP
TO CUT
ALL ROOTS
CLEAN



ROOTS
WILL NOT
PULL ON
WIRES,
CLEAN CUT



DIG BALL
IN SAND
AS SHOVELS
CLOSE TIGHT





THE FLAT YELLOW TABLE ON
THE SPADE BOTTOM SITS DOWN
ON THE SOIL INSIDE OF SIDEWALK
TO GET FULL CUT RECEIVER HOLE